

2018 ANNUAL REPORT



Duluth Parks
& Recreation

Our Mission

To promote the health and wellbeing of our community, environment and economy by facilitating recreational opportunities and coordinating the enhancement of our parks, facilities and natural resources now and in the future.



Our Vision

Continue to be the central driving force in strengthening the heritage of a healthy, active community for future generations by continuing the path of improving and enhancing our parks and facilities; protecting our natural resources; and developing partnerships to deliver recreation programs and services.

Contents

Letter from Parks and Recreation Manager	1
Letter from Parks Commission President	2
About Us	3
Budget	4

<u>What's New</u>	
New Staff	5
Grand Avenue Nordic Center	5
Women Hike Duluth	6
All City Senior Picnic	6
Duluth Parks Day	7
Cold Front	7
Duluth Traverse Antenna Farm Phase I	8
Stewart Creek Bridge	8
Morgan Park Disc Golf	8
Clyde Connector Trail	9
DWP Infrastructure	9
Elys Peak Equestrian Trail	10
Installation of the CD3 Station	10
Western Waterfront Trail Pedestrian/Bike Counts	11
Hartley Park Pedestrian Counts	11
Disc Golf at Enger	12
Rename of Lake Place Park	12
Harrison Park	13
Community Action Duluth: Duluth Stream Corps	13
12th Street Lot Access Point	14

<u>Community</u>	
Volunteer Programs	15
Natural Resources & Forestry	16
Senior Programs	19
Flag Football	19
Programming	19-20
Golf Update	21
Permits and Special Events	22-23
Parks Fund Grant Awards	24
Chester Creek Concert Series & Movies in the Park	25
Zoo Update	26

<u>Parks Planning</u>	
Grant Summary	27
St. Louis River Corridor Update	28
Duluth Natural Areas Program	28
Riverside Park	29
Irving Park	30

<u>Glimpse Ahead</u>	
Lincoln Park	30
Invasive Species Management Plan	31
Cross City Trail	31
Canoe and Kayak Rental	32
Sargent Creek Bridge	32
Lakewalk Mini Master Plan	32
DWP Infrastructure Restoration and Plan	32
Campus Connector Trail Plan	32
Americorps Partnership	32
Lakewalk Storm Restoration	33
Park Partners	34





Public Administration Department Parks and Recreation Division

City Hall - Ground Floor • 411 West First Street • Duluth, Minnesota • 55802
218-730-4300 • www.duluthmn.gov/parks/index.cfm



April 12, 2019

Dear Duluth City Residents and Visitors,

Amidst the hurried pace of modern life, Duluth's green space continues to play an instrumental role in our community's health and well-being. Whether you visit a playground, sports field, trail, hockey rink, or picnic pavilion you will see families, friends, school groups and visitors alike enjoying the special spaces that make Duluth such an amazing community for us to live, work and play.

This year's Annual Report reflects the accomplishments, challenges and rewards that 2018 gifted Parks and Recreation. A few items worth greater attention include the Storm Surge recovery, our renewed commitment to protecting our parks, and transitions and growth within our staff and programs.

Storm Surge

Multiple City of Duluth departments rallied to address damages to the Lakewalk and other park and City infrastructure during and after the two Storm Surges in 2018. The collaboration between Engineering, Fire, Auditors, Property & Facilities Management, and Parks & Recreation has been invaluable in navigating the hurdles inherent of the state and federal disaster relief recovery process. It is in these moments we realize our strength as a team and our shared mission in serving the City and its residents.

Protecting our Parks

Through a range of efforts, our division continues to work to protect our parks so that future citizens and visitors of Duluth are guaranteed high quality recreational experiences. By adhering to best practices for trail-building, accessibility, and natural resource management, we are proactively ensuring that our green spaces are inclusive, welcoming and here for generations to come.

In 2018, we reinvigorated the Duluth Natural Areas Program, with Hartley Park nominated for permanent conservation and protection, which prepared us for the nomination of lands along the St. Louis River Estuary.

Transition and Growth

Mayor Larson's support for expanding Parks and Recreation programming resulted in adding two additional full-time Recreation Specialists, Megan Lidd and Sam Werle. And, we look forward to welcoming seven full-time True North AmeriCorps members to help us redefine what programming can look like in Duluth Parks.

Our division has continued to lead our City in becoming a trails city. A historically challenging hiking and mountain biking trail alignment through the Observation Hill/Antenna Farm marked a tremendous accomplishment with the completion of an impressive new bridge. Access to our parks and trails was increased, including the long awaited restoration of the Stewart Creek Bridge along the DWP Trail Corridor. And, we hired a new Trails Coordinator, Matt Andrews, to lead the stewardship of the trails and the user groups who make them so spectacular.

And last, but certainly not least, we welcome new leadership to the division. Alicia Watts joined us as Assistant Manager in 2018, and Jessica Peterson as the new Parks and Recreation Manager in 2019. We're excited to grow together as a team as we look ahead to another amazing year serving the Duluth community.

Lisa Luukkala,
Interim Assistant Manager

Alicia Watts,
Assistant Manager



Public Administration Department Parks and Recreation Division

City Hall - Ground Floor • 411 West First Street • Duluth, Minnesota • 55802
218-730-4300 • www.duluthmn.gov/parks/index.cfm



April 7, 2019

It is my pleasure to highlight this past year on behalf of the Duluth Parks and Recreation Commission members. The dedicated Parks and Recreation Commissioners continue to fulfill their civic duty while paying homage to Duluth's Parks and Recreation mission and vision. It is always an honor to serve our City as a liaison between the citizens of Duluth and its administration.

Public golf in Duluth continued to be on the forefront of the Commissioners' agenda this past year. A Duluth Golf Citizens Advisory Board was appointed by Mayor Larson and tasked with researching and developing findings to inform future plans for our municipal golf courses, which were presented to the City Council in March 2019. A special "thank you" to Erik Torch and Dennis Isernhagen who served on the findings committee as representatives of the Parks and Recreation Commission.

Commissioners were kept up to date on the DWP multi-use trail system and its technical use and standards. There was a lot to be considered when planning a multi-use trail system and I know the Commission appreciates the hard work from the Parks and Recreation Division, passion from community members, and education from each of the user groups as the trail plan developed.

Another notable accomplishment is the Communication to City Council Protocol developed with the assistance of commission members Erik Torch, John Schmidt and Dudley Edmondson. This protocol designates a formal process to communicate on a specific vote when split.

In addition to all the hard work of our devoted Commissioners this past year, a highlight of our meetings is often the special presentations that inform us of the meaningful programs and efforts underway in our Parks:

- **Senior Programming.** An overview of Senior Programming from Theresa Mellinger highlighted activities offered throughout the city for our aging population. Commissioners also enjoyed volunteering to serve holiday meals to seniors at Evergreen Senior Center, Portland Community Center and Morgan Park Community Center.
- **Duluth's Natural Areas Program.** A review of the Duluth Natural Areas Program from Diane Desotelle included the exciting announcement of Hartley Park's nomination to become a designated natural area. The City is also preparing an exciting St. Louis River nomination, which will be shared with Council in the upcoming months.
- **Park Ranger Program.** William Stovern gave a presentation on Duluth's Park Ranger Program and how the day to day looks in keeping our parks and trails safe.
- **Climate Resiliency.** Tom Beery from the Minnesota Sea Grant Program delivered a fascinating review of studies done on climate resiliency in Duluth. Whether you get behind climate change or not, there is no denying that Duluth's weather patterns have intensified. The changes in climate affect decisions in the Parks and Recreation department and how we plan to protect our parks, trails and other green space.

The Commission looks forward to working with the new Parks and Recreation Manager, Assistant Managers and new Commission members this coming year. We will continue to be stewards of our parks, trails and outdoor spaces because we know how incredibly lucky we are to live in beautiful Duluth!

Amanda Crosby, President
Duluth Parks and Recreation Commission

About Us

Parks & Recreation Staff

William Roche-Manager
Alicia Watts-Operations Assistant Manager
Lisa Luokkala-Stewardship Assistant Manager
Katie Behling-Wedding Coordinator
Nick Budnik-Recreation Specialist
Kraig Decker-Permits Coordinator
Andy Holak-Trails Coordinator
Diane Desotelle-Natural Resources Coordinator
Theresa Mellinger-Senior Coordinator
Pamela Page-Recreation Specialist
Jessica Schoonover-Admin Clerical Specialist
Jim Shoberg-Senior Parks Planner

Part Time Recreation Leaders—Summer Staff

Madison Persson, Laken Lymburner, Alli Urevig, Jesse Hennon, Emily Kamatchus

*New Staff 2019: Jessica Peterson-Manager, Matt Andrews-Trails Coordinator, Megan Lidd-Recreation Specialist, Sam Werle-Recreation Specialist

Park Maintenance Staff

Dale Sellner-Parks & Grounds Supervisor
Billy Davis-Lead Worker, Trails
Bob Dunsmore-Lead Worker, Parks
Jack Schade-Lead Worker, Fields
Clark Christensen-City Forester
Cheryl Skafte-Volunteer Coordinator
Robert Bugbee-Kevin Jentoft
Jennifer Monroe-Dena Petite
Darin Franckowiak-Tammy Gosline
Ben Sosniecki-Todd Halbakken
Cory Wagner-Greg Hanson
Wendy Wohlwend-Todd Kobus
John Capra-Don Kienholz
Abbie Hopper-Trevor Christensen

Property & Facilities Staff

Erik Birkeland-Manager
Danielle Erjavec-Property Services Specialist
Rob Hurd-Construction Project Coordinator
Alexander Jackson-Energy Coordinator
Mike LeBeau-Construction Project Supervisor
Hank Martinsen-Property Services Supervisor
Joe Miller-Facilities Operations Supervisor

Parks Commission

Amanda Crosby-President, Commission on Disabilities
Jill Joyce-Vice President, District #4
Tjaard Breeuwer-Secretary, District #1
John Schmidt-At Large
Dudley Edmondson-At Large
Dennis Isernhagen-District #2
Britt Rohrbaugh-District #3
Jill Joyce-District #4
Dean Vogtman-District #5
Erik Torch-Community Education
Kristin Bergerson-Recreation Professional

Non-voting Members

Em Westerlund-City Council Liaison
Frank Jewell-St. Louis County Board Liaison
David Kirby-ISD #709 Board Liaison

To act in an advisory capacity to the Mayor, City Council, the Parks and Recreation Division and other agencies and organizations regarding matters related to Duluth Parks and Recreation programs and facilities.

Natural Resource Commission

Christine Penney-Chair Person
Judy Gibbs-Vice Chair Person
Susan Staninch-Commissioner
Mike Pennington-Commissioner
Jim Lemmerman-Commissioner
Beth Kleinke-Commissioner
Brandon Van Tassel-Commissioner

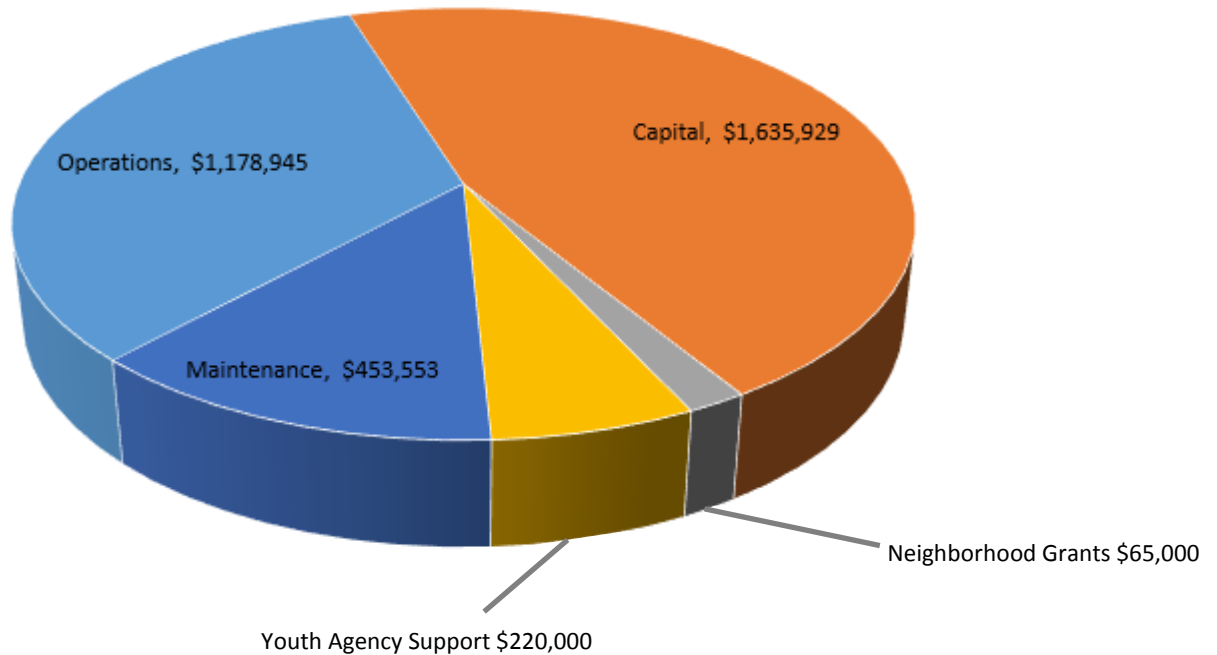
Non-voting Members

Em Westerlund-City Council Liaison

To educate and inform the public and act as an advocate for preservation, protection and promotion of Duluth's urban forest and to advise the City on the management of this forest.

Budget

2018 Expenses



Operations

- Wages & benefits
- Equipment & supplies
- Marketing & printing
- Vehicles & mileage
- Membership & dues
- Special Events & concerts
- Senior programming
- Training & education
- Youth programming

Maintenance

- Maintenance Staff
- Cleaning, repairs & maintenance at parks, fields & community centers
- Invasive species removal team
- Training, certifications & licenses
- Forestry Operations

Capital

- Community Center upgrades
- Trail repair & improvements
- Park improvements

Neighborhood Grants

Partner with the Duluth Superior Area Community Foundation to offer grants to neighborhood community groups in the spring and fall.

Amount awarded in spring \$5,000
Amount awarded in fall \$3,000

Youth Programming

- Boys & Girls Club of the Northland (Lincoln Park)
- Duluth Area YMCA True North AmeriCorps (City Wide)
- Duluth Community School Collaborative (East Hillside)
- Neighborhood Youth Services (Central Hillside)
- Valley Youth Center (West Duluth)
- Valley Youth Center/Duluth Area YMCA (Gary New Duluth)
- YMCA/Youth Outdoors Duluth Collaborative

What's New

New Staff

During 2018, new positions were added within the Parks and Recreation Division. These include a Natural Resources Coordinator, Forester, and two additional Recreation Specialists. The Natural Resources Coordinator has been involved with the development and implementation of policies, plans, programs, and projects that are intended to protect and restore natural resources on city-managed properties. Our City Forester implements our Emerald Ash Borer management plan along with planting and removing boulevard trees throughout Duluth. The Forester works in conjunction with the Natural Resources Coordinator on forestry related property items and handles trees that have been impacted by disease. Our two additional Recreation Specialists will aid with our growing programming initiative, and will work with community partners to complement the work being done to fill in any gaps that exist throughout the City.

Grand Avenue Nordic Center

Adjacent to Spirit Mountain alpine ski area, the Grand Avenue Nordic Center opened on December 11, 2018 and provides a dependable season-long venue for recreational cross-country skiing, youth activities and regional high school events. Phase I of the project included 2.5km of new trail, of which 1.5km has snowmaking capability. The ski trails receive daily grooming and provide access to the existing Grand Avenue Chalet at Spirit Mountain. This project was made possible through City half and half tourism dollars, tireless fundraising by the Duluth Cross-Country Ski Club and a Federal Recreational Trail Grant administered by the Minnesota Department of Natural Resources.



What's New

New City Wide Events

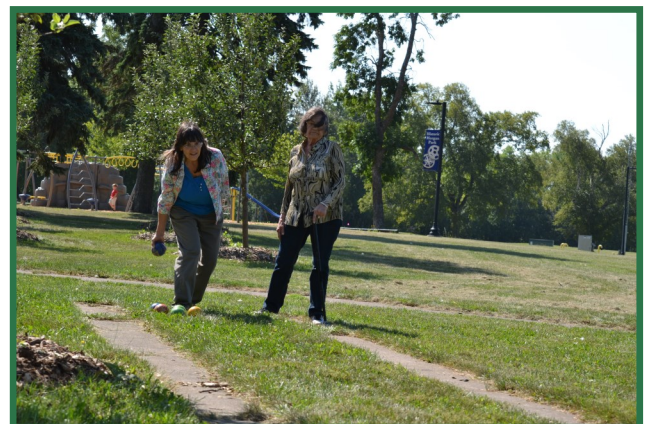
Women Hike Duluth

Parks and Recreation partnered with Sandi Larson from Hike Duluth, to host a series of free guided hikes for women throughout the City. These hikes are hosted once per month and are considered entry level hikes. The hikes have been well attended, ranging from 30-125 participants per hike. A special thank you goes to Sandi Larson for the excellent idea and the work that goes into preparing for these events.



All City Senior Picnic

For the first time in over ten years, we brought back a fan favorite event, the All City Senior Picnic. 189 seniors purchased tickets to attend this event held at Morgan Park. Seniors enjoyed outdoor games, face painting, dancing, lunch from the grill, hula hoop contests, and entertainment provided by Todd Eckart. Seniors also had their chance to win several prizes. We are looking forward to this event in 2019!



What's New

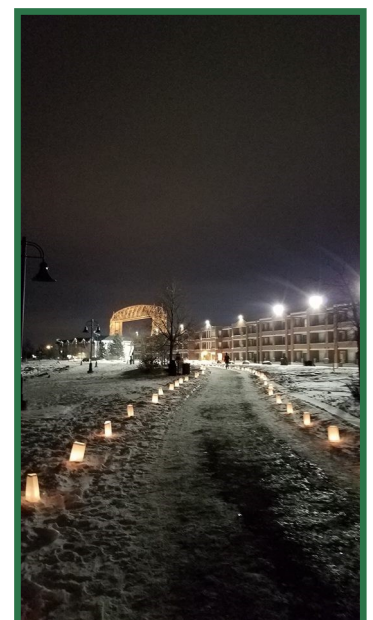
Duluth Parks Day

As part of a national effort to get kids and adults out to explore parks, Duluth declared May 19, 2018 "Duluth Parks Day." To celebrate, Morgan Park hosted disc golf activities, and the first 50 youth received a free disc. Bayfront provided kite flying and bubble making, and the first 50 youth received a kite. Lester Park provided geocaching, an interpretive hike, and crafts; the first 50 youth received a compass. A light picnic lunch was provided at all three locations.



Cold Front

2018 marked the first Cold Front Event that transformed a Canal Park parking lot into a winter festival ground. We could not think of a better way to celebrate winter! Multiple City of Duluth departments and businesses collaborated to make this event possible. The highlight of the event was the ice track, which took participants on a skating path from the festival grounds, along the Lakewalk to Endion Station. The weather was cold, but that didn't stop Duluthians from coming out and enjoying the giant sledding hill, bon fires, curling rink, s'mores, music, vendors, and activities throughout the 4-day event.



What's New

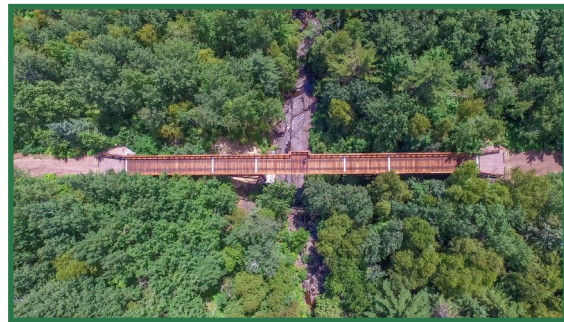
Duluth Traverse Antenna Farm Phase I

Parks Staff, COGGS representatives and members of the public celebrated the opening of the Duluth Traverse Antenna Farm Segment on November 1, 2018. The segment completes phase I of III and is roughly $\frac{3}{4}$ of a mile set over challenging and rocky terrain with scenic views of Lake Superior and Duluth neighborhoods. The impressive bridge structure along this segment, completed by COGGS trails crew, is unique to the Duluth Traverse. Phase I provides connection between the Central High School site and the existing Enger Park segment of the Duluth Traverse via a temporary on-road segment. Though challenging, completion of this project was an exciting victory for the City, COGGS and community trail users. Phase II of the Antenna Farm project is slated to begin in 2019.



Stewart Creek Bridge

Restoration efforts on the Stewart Creek Bridge included replacing deteriorated timbers with modern rot-resistant timbers and decking, encapsulating deteriorated concrete footings, and installation of a cable railings system for fall protection. A bump out was added to mimic the character of the original found midway on the river side of the bridge. The view of the estuary below provides a scenic experience to trail users. The project was funded in part by a \$200,000 MN DNR Regional Trail Program grant supported by City half and half tourism tax match dollars.



Morgan Park Disc Golf

Thanks to an anonymous donation from a dedicated Morgan Park community member, the existing outdoor disc golf course at Morgan Park Community Center was revitalized in the summer of 2018. Recent improvements to the Park caused alignment problems for the old disc golf course, as users were aiming into active recreation areas like the playground. With help from the Lake Superior Disc Golf Community, the course was re-aligned to avoid obstacles and all seven disc golf baskets were replaced in time for Morgan Park's National Night Out celebration on August 7, 2018. A special thank you to Park Maintenance staff who installed the new baskets and painted new tee pad markers on existing sidewalks in the park.

What's New

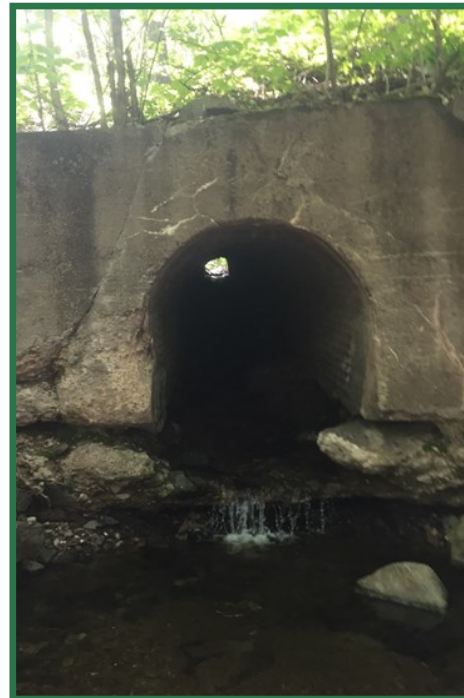
Clyde Connector Trail

Reconstruction and restoration of the Clyde Connector Trail was also completed in 2018. The trail was in poor shape with significant washouts down its center, and consisted of a series of switchbacks traversing the hill. Over time, these switchbacks were cut off by social use and led to significant loss of soil. This erosion was identified as a necessary repair due to its proximity to Stewart Creek (designated trout stream) and the importance of neighborhood access to the DWP Trail, Skyline Parkway and Magney-Snively Park. The project was funded by a \$150,000 MN DNR Federal Recreational Trail Program grant supported by City half and half tourism tax match dollars.



DWP Infrastructure

The City of Duluth also began restoration work in 2018 on the rail bed surface itself. That work included: re-grading to meet accessibility slope standards, repairing of a large washout between Ely's and Bardon's Peak, slip-lining four major box culverts, replacing of many smaller culverts, installing of gates at access points to restrict motorized use, and the grading of trail surface to ensure proper drainage while preparing the subgrade to receive gravel surfacing. The work was funded by a \$150,000 MN DNR Federal Recreational Trail Program grant that was matched with City half and half tourism tax dollars.



What's New

Elys Peak Equestrian Trail

The Elys Peak loop was improved and hardened in 2018 to create a loop trail for equestrian use. A partnership between the Duluth Area Horse Trail Alliance (DAHTA) and Duluth Cross-Country Ski Club (DXC) made this project a reality. Improvements to make the trail more resilient to equestrians while also improving the ski experience with a flatter and more level trail, and promoting grooming during low snow conditions. Over \$160,000 in half and half tourism tax funding leveraged additional dollars for design and construction, with over \$30,000 donated by DAHTA. The loop trail is the first phase of development for equestrian use.



Installation of the CD3 Station

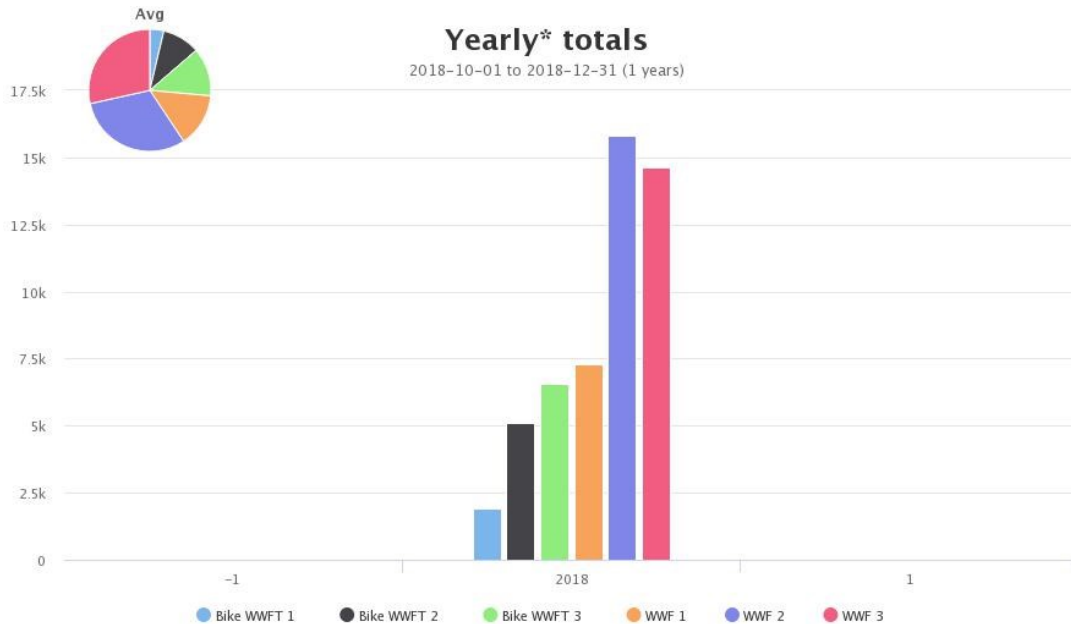
In September 2018, Duluth became the host of the first CD3 (Clean, Drain, Dry, Dispose) Station at Munger Landing. This boat cleaning station helps boat owners to reduce the spread of aquatic invasive species (AIS) by providing tools to remove AIS via cleaning, draining and drying their equipment before and after their boat trip on the St. Louis River. The project was made possible by Wildlife Forever and state funds given to St. Louis County to address AIS management. The waterless, use-operated cleaning equipment includes a wet/dry vacuum, blower, and tethered hand tools that are accessible and user-friendly. A system internet connection allows natural resource managers to track visitor use and equipment functionality. The digital kiosk that offers a cleaning tutorial that can be customized to provide public outreach on AIS issues affecting local waterways. Recently, the City received funding to help maintain the station and to provide the public with education.



What's New

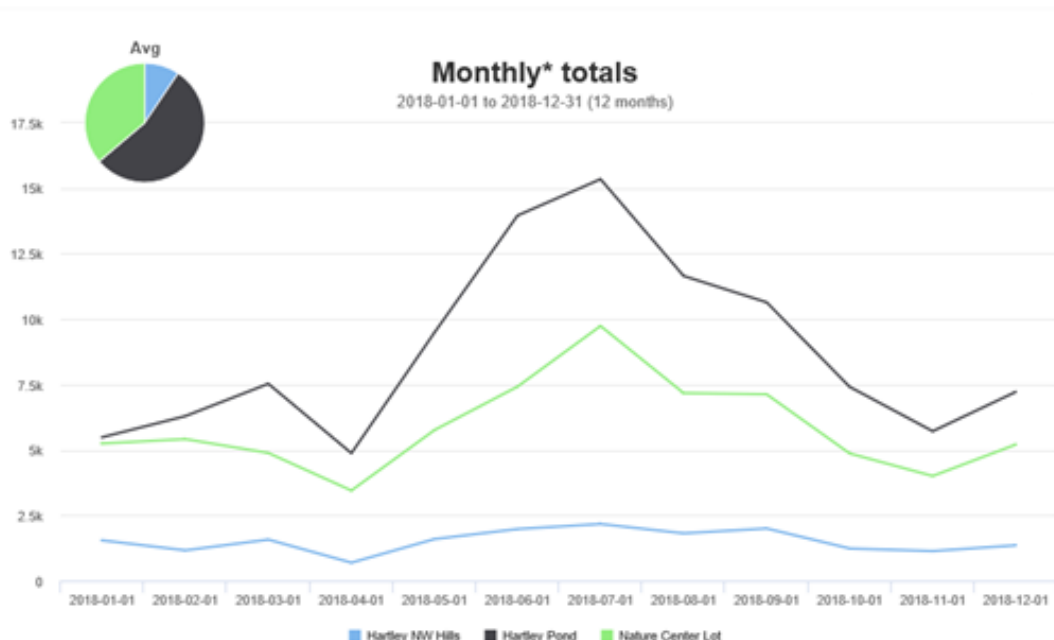
Western Waterfront Trail Pedestrian/Bike Counts

Parks and Recreation received funds through the NOAA Coastal grant program to install pedestrian counters at three locations along the Western Waterfront Trail in October 2017. An additional bicycle counter component was installed at each of the three locations in October 2018. The two different counters will better differentiate pedestrian use vs. bicycle use to further inform staff about visitor use patterns. The three locations include the bridge over Knowlton Creek (WWFT/WWF 1), the south side of Indian Point Campground (WWFT/WWF 2), and the bridge over Kingsbury Creek (WWFT/WWF 3).



Hartley Park Pedestrian Counts

These counters were paid for by the City Parks fund and were installed in December 2017, with a additional bicycle counter component installed in October 2018 to each of the three locations to better differentiate users and further inform staff about visitor use patterns.



What's New

Disc Golf at Enger

Disc golf has found a new home at Enger Park Golf Course with 18 holes that opened in 2018. Set along the back nine of the golf course, the course offers the Northwoods and out-of-region disc golfers a new tournament-quality course to play. The Lake Superior Disc Golf Association, City of Duluth Parks and Recreation team, collaborated to complete this project.



Rename of Lake Place Park

Several years ago the Indigenous Commission requested to change the name of what was then known as Lake Place Park. The new name, Gichi-ode' Akiing, which translates to A Grand Heart Place, was adopted by City Council in December 2018. Since the Indigenous Commission began considering this request, Commissioners have put their knowledge of culture, history and local needs to work in consulting with local stakeholders to create a vision for the park's future. The renamed park space is intended to be a place of healing for Indigenous people and all who enter it. It will also offer peace, joy and invitation to people of all cultures. The park's name will help express a law found in traditional Anishinaabe expressions, *nindinawemaganidog*, which means "All of my relations". In the future, the park space will provide opportunities to highlight the Indigenous history of this area. Having a positive representation of Native culture will benefit people in the downtown area, as well as young people who have been inundated with negative stereotypes and representation. The new name for the park is about acknowledging the past, but does not remain focused on trauma, guilt, or fear. Though we will not forget the past, this park offers our city an opportunity to create reconciliation by reclaiming the Indigenous part of our history moving forward with a grand heart. Signage reflecting the park's new name will be updated in the spring. Updates to park programming, and its overall design, will be evaluated over the coming months as part of the Lakewalk Study, and through partnerships between stakeholders, including the Parks and Recreation Commission, the Indigenous Commission, the Greater Downtown Council, and many others.



What's New

Harrison Park

Landscape improvements at Harrison Park last year included the removal of asphalt tennis courts to improve stormwater management while increasing greenspace. The installation of new stormwater infrastructure occurred next to Grand Forks Avenue to better manage water runoff. A concrete walk was poured to connect Grand Forks Avenue with Third Street, and increase access to the park, which is now illuminated with energy efficient LED lamps. A concrete patio with an ADA accessible ramp was also poured at the back of the building to enter and exit the building. Other amenities to the park included picnic tables and grills.



Community Action Duluth: Duluth Stream Corps

The Duluth Stream Corps removed invasive species including buckthorn, Eurasian honeysuckle, non-native phragmites, wild parsnip, garlic mustard, and knotweed from woods and stream corridors in and along the Western Waterfront Trail, in Kingsbury Creek, Lincoln Park, Hartley Park, and along the St. Louis River Estuary, totaling over 100 acres.

In addition, the Duluth Stream Corps checked and did replacement plantings along the WWFT, along the Kingsbury Creek corridor, and along Miller Creek in Lincoln Park. Species included white and red pine, white cedar, basswood, red, silver, and sugar maple, red and bur oaks, aspen, cottonwood, river and paper birch, and some pin cherry, totaling over 50 acres of restoration.

What's New

12th Street Lot Access Point

Park Maintenance worked to revitalize the 12th Street Beach access point and parking lot in 2018. The existing infrastructure was over 20 years old, overgrown and failing. Park Maintenance replaced the existing structure with a prefabricated modular boardwalk comprised of a metal frame with wood decking designed through Modular Trails Structures. Additional improvements to the 12th Street Beach access point included:

- crack filling, seal-coating and re-stripping the parking lot
- repositioning, reinforcing and re-staining the retaining wall
- installing new fencing
- placing concrete pads for porta potties, garbage and the approach to the boardwalk

The project will be completed in 2019 when Park Maintenance installs a permanent recycling and garbage station, adding curb stops, as well as updates to signage.



Community

Volunteer Programs

2018 Clean and Green Accomplishments

Litter - it's a never-ending battle. Through the City of Duluth's Clean and Green service initiative, hundreds of volunteers gave thousands of hours of their time during 2018. Groups and individuals helped remove unwanted trash from our parks and trails, and contributed to beautification projects like weeding in the Rose Garden and mulching trees in various neighborhood parks.

- 3,790 reported hours of service
- 4,399 reported pounds of bagged garbage collected



2018 Duluth Invaders Accomplishments

Invasive, non-native plants can be devastating to native plants, trees, and wildlife habitat. The Duluth Invaders service initiative is committed to addressing the influx and growth of invasive plant populations in our community. Through community education, mapping and tracking efforts, as well as eradication events and treatment efforts, we are taking on invasives.

- 1,408 reported hours of service
- 50+ R2ED (Rapid Response and Early Detection) team members recruited and trained



Trails

In 2018, volunteers contributed **667 hours** to trails projects. Working with project partners, including the Cyclists of Gitchee Gumme Shores (COGGS), Duluth Cross-Country Ski Club (DXC) and the Duluth Climbers Coalition (DCC), the Parks Division was assisted in the completion of trails at Lincoln Park, Quarry Park and Chester Park.

2018 reLEAF Accomplishments

A healthy urban forest is an important community resource. The reLEAF service initiative works to promote volunteer engagement in protecting our urban forest, educating the public on the importance of our urban forest and hosting service activities that include tree planting and restoration projects.

- 199 reported hours of service



Parks and Recreation Office Assistants

In 2018, volunteers contributed **78.5 hours** to supporting Parks and Recreation office projects through the UMD Honors Program.



Recreation

In 2018, volunteers contributed over **68 hours** to recreation programs and offerings. Volunteers help Duluth Parks and Recreation offer opportunities such as skating at the Heritage Sports Center and other special events.



Community

Forestry

The City's Emerald Ash Borer (EAB) plan calls for removing all ash trees under 12" in diameter, injecting those of good form that are larger than 12" and planting one tree for every tree removed.

This past spring 189 trees were planted in the Congdon and Woodland neighborhoods to replace ash that had been removed. Ash tree removals in Lakeside this spring and fall took down 408 trees. In West Duluth, 167 ash were injected to prevent infestation by EAB.

Duluth is recognized as a "Tree City USA" by the Arbor Day Foundation for the 27th year and this past year we achieved a "Growth Award" for higher levels of tree care.



Natural Resources

Close to 25% of the City's public lands is open space! Understanding how, when and where to manage our natural resources on these lands is important to the health and well-being of our community. The natural resources program covers a lot of specific areas related to protection and restoration, as shown in the diagram on the next page, and in combination this work goes toward healing our connection to the natural world.

Community

Goal

Sustainable & Resilient Natural Resources

1. Overarching NR Plan(s) – Invasives, Plant Communities
2. DNAP
3. City Deer hunt
4. Natural Resource Commission



Plans/Policies Procedures

1. Nominate DNAP Lands
2. Pubic Lands with County



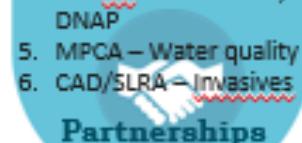
Land Protection

1. St. Louis River Summit
2. DNAP logo, brochure
3. Duluth Invaders
4. We Are Water Exhibit
5. Youth Symposium



Outreach

1. MNDNR, EPA - Mud Lake Alternatives
2. USACE - Reuse of Dredge Materials
3. Local Gov't - Watersheds
4. MN Ld Trust – Lands, DNAP
5. MPCA – Water quality
6. CAD/SLRA – Invasives



Partnerships



Natural Resources Coordinator

Work with partners to protect & optimize the City's owned and managed open space lands through the protection & restoration of natural resources.



Invasive Species

1. Draft Plan
2. MDA grant
3. County AIS grant
4. CISMA leadership team



Water Resources

1. Kingsbury, Miller, Coffee, Mission stabilization
2. Tischer & Keene - e-coli sources



Forestry

1. Work with forester on large parcel management
2. Explore management goals



Permitting

1. Advise on park designs
2. Advise/assist with grant applications
3. Review EAWs as needed

Community

Senior Programs

Senior programming offered through the Duluth Parks and Recreation Division provides a gathering space at three different facilities where seniors can visit and socialize, enjoy meals, and participate in fun activities. Popular events taking place at Evergreen, Morgan Park, and Portman Senior Center are card games, bingo, arts and crafts, educational seminars, and special parties such as the Senior Appreciation Day and Halloween Party.

Senior Center Participation	Attendance
Evergreen	8,601
Morgan Park	3,947
Portman	5,063



Senior Events	Attendance
Senior Appreciation Day	128
Duluth Heights TOPS Weight Classes	1,251
All City Senior Picnic	189
Centarians Honored at 100 Year Birthday Party	10
Evergreen Holiday Banquet	124
Morgan Park Holiday Banquet	79
Portman Holiday Banquet	99

Year Birthday Party

The Parks and Recreation Division sponsored the 100 Year Birthday Party Celebration during the 2018 Northland Senior Expo at the DECC. In partnership with AEOA, North Shore Estates, and Age Well Arrowhead, ten centenarians were honored. Dan Hanger with Fox 21 emceed the event and read a short biography about each guest. Assistant Manager, Alicia Watts, presented each guest of honor with a special certificate, and guests were invited to enjoy birthday cake with Duluth's 2018 celebrated centenarians: Virginia Nelson – 102, Thelma Kortkamp – 101, Ann Moloney – 102, Irene Swallow – 101, Marian Rotondi – 101, Janet Peterson – 104, Faye Griffin – 100, Virginia Peterson – 100, Kenneth Anderson – 100, Martha Westlund - 103.



Community

Programming

Programming Event	Attendance
Bayfront Skating	1,123
Bayfront Family Center (summer)	1,220
Learn-to-Skate (DAHA)	150
Champions Building Champions	200
Art Kits & Equipment Rentals	1,280
Ultimate Frisbee	57
Flag Football	139
Play Gym	1,260
Valentine's Skate for Your Heart	190
DECC Family Skating Parties	400
Boo Bash	250
Gobbler Glide	125
Santa Skate	175
Sandmodeling Contest	450
Adult Softball	26 teams
Spring Break Learn to Sport	120
Women Hike Duluth	482

2018 Flag Football

Flag football was once again a hit at the Wheeler Athletic complex with 147 participants learning teamwork, communication skills, and how to play football throughout three divisions including the first 6th grade division. Thanks once again to our volunteer coaches, parents, and referees who made the league happen. Look for a 7th grade division in 2019!



Youth Programming

Duluth Parks and Recreation continued financial support of local youth programming in partnership with the following agencies in 2018:

Boys & Girls Club of the Northland (Lincoln Park)

Duluth Area YMCA True North AmeriCorps (City Wide)

Duluth Community School Collaborative (East Hillside)

Neighborhood Youth Services (Central Hillside)

Valley Youth Center (West Duluth)

Valley Youth Center/Duluth Area YMCA (Gary New Duluth)

YMCA/Youth Outdoors Duluth Collaborative



Community

Bayfront

Seasonally, recreation programs continued through-out the year and attendance held steady. Activities at Bayfront Family Center for both Winter and Summer drew in many new families, most of them residents who had heard of the opportunities from their friends and family. Tourists on the stroll, were impressed upon finding the set up for both seasons, and everyone was very excited by all the fun, active things we had to offer at this site, which is free and open for all to use.



Art Kits

Our Art Kits and Recreation Equipment loan program continues to expand the possibilities for non-profit youth organizations and community groups. These kits introduce people to creative, enjoyable, hands-on activities that would otherwise not be affordable to these groups. Our staff, with the help of a full-time Americorps were able to increase our reach and spread the love of Art and Games to a larger portion of the Duluth community.



Play Gym

Play Gym is an informal, drop-in opportunity for parents and preschoolers to gather, socialize and engage in active play. Parks and Recreation staff provide fun toys and equipment onsite for pre-schoolers to enjoy. A change in locations and new collaboration is in the works for 2019. As we move forward down the path of program expansion, we will finally be making some decisions about how Play Gym will look in the future.



2018 Golf Update—Enger & Lester Park Public Golf Courses

Season Pass Type	Amount Sold
Unlimited	108
Senior	194
Young Adult	120
Junior	14
Family	26
Skyline Pass	1,354
Total	1,816

Daily Fees	Amount Sold
18 Hole	10,382
9 Hole	12,135
18 Hole (Senior/Junior)	7,144
Outings	5,207
Twilight	3,432
18 Hole Special	1,111
9 Hole Special	250
Total	39,661

Miscellaneous	Amount in Sales
Driving Range	\$79,236
Merchandise	\$163,178
Food & Beverage	\$345,523
Other Rentals	\$15,102
Total	\$603,039

Cart Rentals	Amount Sold
18 Hole	12,425
9 Hole	12,626



Community

Permits & Special Events

2018 saw a challenging, yet rewarding year for events happening in the parks. With several closures and construction projects, Parks staff had to be creative to collaborate with the permittees to rethink their events and avoid construction. This year will prove to be a great resource and learning experience for being creative for future events that will be impacted by even larger scale planned construction projects.

With a small marketing budget, Parks staff produced several rack cards that were distributed both locally and regionally, and increased our online presence via social media and paid advertisements with local media outlets. We hope to continue this in future years to broaden our potential for more permitted use within our fantastic park spaces.

Permits issued for the outdoor park space was up 10% over last year. This includes permits for weddings, special events, and private events. Wedding events continued to be our largest revenue generator. The largest total quantity of permits issued was for private events. With the addition of commercial operations permits in 2019, we should expect to see growth in permitted use, to include overall use and revenue.

Permits issued for indoor building use was up 5% over the last year, with Duluth Heights Community Recreation Center the most reserved building space that we manage. With additional community centers being added to our reservation system under the City of Duluth’s management services, we will likely see an increase in the number of permits issued.



Permits & Special Events	Amount
Duluth Heights	91
Evergreen	70
Morgan Park	36
Portman	66
Piedmont	5
Total	268

Permit Type	Amount
Special Events	101
Alcohol Consumption	75
Busking	25

Community

Community Parks & Recreation Program 2018 Grant Awards

In partnership with the Duluth-Superior Area Community Foundation, the City of Duluth provided funding for neighborhood-based parks enhancements and recreation services on Duluth’s parks, recreation, and trails system. 2018 was the final cycle of the Parks Fund Grant program. Discontinuation of the program was made necessary by the modest initial size and steadily diminishing purchasing power of the Parks Fund. When passed in 2011, the Parks Fund levy provided for a staff less than half the size of that in place in the 2000’s and an annual capital budget of \$700,000 for hundreds of miles of trails and more than 129 park properties. Because staffing and capital costs steadily increase and, unlike all other City tax levies, proceeds from the Parks Fund levy may not grow with increasing property values, the purchasing power of the fund has dropped significantly. As a result, it is necessary to reallocate funds from this valuable but discretionary grant program to cover core staffing and capital costs.

Organization	Project	Spring 2018
Chester Bowl Improvement Club	Purchase of ski equipment	\$3,000
Hartley Nature Center	Benches and trash receptacle	\$5,000
Riverside Community Club	Site furnishings	\$5,000
Local Initiatives Support Corporation	Movies in the Park support	\$5,000
Autism Society of Minnesota	Northland Social Skills Classes	\$1,000
Wheels on Trails	Four outdoor events	\$5,000
Congdon Park Recreation	Construct players box	\$5,000
Duluth Area Horse Trail Alliance	Installation of two mounting blocks	\$1,000
Courage Kenny Foundation	Repair boardwalk and purchase hoist lift	\$5,000
Duluth Cross Country Ski Club	Lester-Amity Chalet improvements	\$5,000
Neighbors of Lower Chester Park	Playground installation	\$5,000
Woodland Amateur Hockey	Enclosed penalty boxes	\$5,000
Organization	Project	Fall 2018
Cyclists of Gitchee Gumees Shores	Mountain bike skills park at Keene	\$3,000
Duluth Superior Sailing Association	Sailing program equipment upgrade	\$3,000
Gary New Duluth Development Alliance	Skateboard park base materials	\$3,000
Superior Hiking Trail Association	Erosion prevention on Superior Hiking Trail	\$3,000
Woodland Amateur Hockey Association	Public skating rink light efficiency update	\$3,000

Community

Chester Creek Concert Series

The Chester Bowl Concert Series, a joint program with the Chester Bowl Improvement Club and the City of Duluth, celebrated its 36th season with an awesome lineup of bands. Concert attendance averaged more than 585 people each week, with 5,850 guests attending over the course of the summer. Rock, Bluegrass, a full horn section-the Chester concerts featured a wide variety of music. This free, family-friendly event had another successful year and we look forward to season 37 in Summer 2019!

2018 Schedule Recap:

June 12-The Most Wanted

June 19-Coyote

June 26-A Band Called Truman

July 3-Alamode

July 10-Breanne Marie & the
Front Porch Sinners

July 17-Feeding Leroy

July 24-Listening Party

July 31-Honest Maude

August 7-Fish Heads

August 14-Porky's Groove Machine



Movies in the Park

The City of Duluth and the Greater Downtown Council hosted another great Movies In The Park Series in Leif Erikson Park, showing eight movies over the course of the summer.

2018 Attendance:

July 13`Dirty Dancing: 2,000 visitors

July 20`Ghostbusters: 2,000 visitors

July 27`Ghostbusters 2016 Answer the Call: 2,500 visitors

August 3`Wonder

August 10`Footloose: 2,500+ visitors

August 17`Jumanji: 3,500 visitors

September 2`LL Land: 250 visitors

September 7-Despicable Me 3: 500+ visitors



Community



2018 LAKE SUPERIOR ZOO

ADMISSIONS REPORT

Admission	Price	Amount of Tickets Sold
Adult (13 years and older)	\$10	24,617
Adult (group rate)	\$9	954
Adult (1/2 off reciprocating member)	\$5	1,975
Adult, military	\$9	354
Seniors (62+)	\$9	2,561
Seniors, military	\$8	42
Seniors (1/2 off reciprocating member)	\$4.5	105
Children (3-12 years)	\$5	10,752
Children (3-12, group)	\$4	3,747
Children, military	\$4	130
Children (1/2 off reciprocating member)	\$2.5	1,291
Boo at the Zoo (gate ticket purchase)	\$10	3,537
Boo at the Zoo (advance ticket purchase)	\$9	1,995
Bulk ticket & pre-paid admissions	Varies	1,609
Totals	N/A	53,669
Gratis Admissions	Number	% of Total Admissions
Lake Superior Zoo Members	13,871	17.5%
Other Members (excluding ½ off reciprocating)	1,395	1.8%
Free (children 2 & under, and Blue Star Admission)	7,066	9%
Free Community Day 4/4/2019	2,438	3.1%
Total	24,770	31.4%
TOTAL Paid Admissions	53,669	68.5%
TOTAL Gratis Admissions	24,770	31.5%
GRAND TOTAL ADMISSIONS	78,439	100%

*Prices listed are general admission prices. Actual amount paid may vary due to coupons, specials, events, etc.

Parks Planning

Parks Planning Projects

Completed in 2018

- Spirit Landing Site Plan
- Lower Chester Park Mini-Master Plan

In progress 2018

- DWP Trail Technical Use and Standards Plan
- Western Waterfront Park and Trail Mini-Master Plan
- Campus Connector Trail

PROGRESS IN THE PARKS

Visit the Duluth Parks and Recreation website for project updates

<http://www.duluthmn.gov/parks/parks-planning/progress-in-the-parks>

Grant Summary: 2018 Project Implementation

Duluth Parks and Recreation was the fortunate recipient of many state and federal grants in 2018, providing financial support for many restoration and new construction projects within the City of Duluth.

- Federal Recreational Trail Grant Program \$31,901 - Installation of signage, wayfinding and benches along three segments of the Cross City Trail (Zoo to Green Street, River Route, Carlton Street to Lakewalk).
- Federal Recreational Trail Grant Program \$150,000-Construction of the 1.4km connector trail to the existing cross-country ski trails at Grand Avenue Nordic Center.
- Regional Trail Grant Program \$250,000-Restoration of Sargent Creek Bridge.
- Conservation Partners Legacy Metro Grant \$399,375-In partnership with South St. Louis Soil and Water Conservation District; Restoration of Tischer Tributary 6.5 in Hartley Park.
- Parks and Trails Legacy \$1,293,795-Hartley building and site improvements, signage, wayfinding, and access improvements.
- Parks and Trails Legacy \$889,198-Complete the western half of the Duluth Traverse and make critical connections.
- Coastal STAR \$10,000-Hartley Park Management Plan and resource inventory survey.
- US Forest Services Great Lakes Restoration Initiative \$99,420-In partnership with Community Action Duluth; EAB mitigation in the Miller Creek Watershed.
- Clean Water \$426,641-In partnership with South St. Louis Soil and Water Conservation District; Piedmont and Lincoln Park stormwater and green infrastructure improvements.



Parks Planning

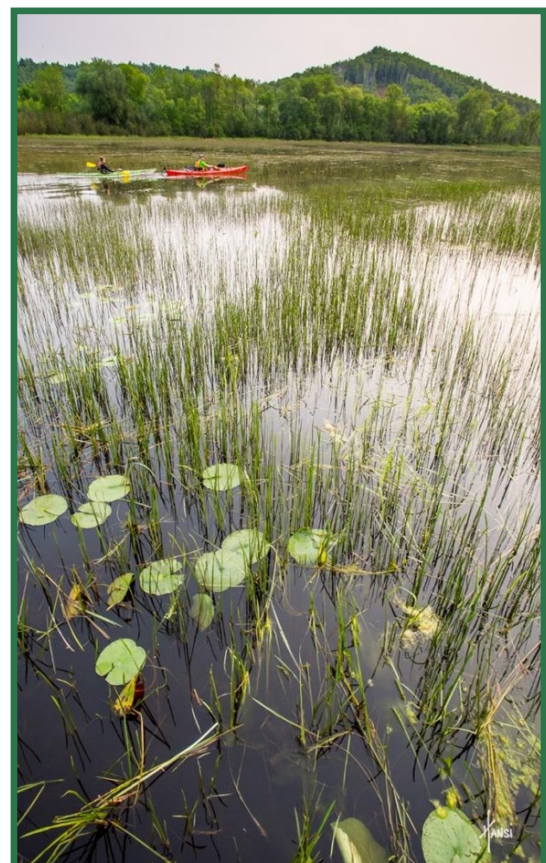
St. Louis River Corridor Update

The City of Duluth completed its fifth year of investment in the St. Louis River Corridor Initiative. This \$18 million investment is funded by bonds collected through half and half tourism tax approved by the Minnesota Legislature in 2014. The goal was to match these funds, with the additional state and federal grants and donations, for a total investment of \$50 million. A major component of the initiative was identification of thirteen parks in West Duluth recommended for recreation upgrades and park improvements. In 2018, two of these parks saw significant upgrades.



Duluth Natural Areas Program

The Duluth Natural Areas Program resembles the phoenix rising from the ashes. The 2002 ordinance was dusted off and the DNAP was rejuvenated thanks to the City's focus on our parks and open spaces. With this new energy, we are working to secure the future of Duluth's treasured outdoor places by protecting notable lands and managing them for their natural resources. The Hartley Natural Area was nominated to the DNAP successfully and the next component is to write a management plan to support the nomination in 2019. In addition, data has been collected and a report drafted to nominate several parcels along the St. Louis River Corridor in 2019. As part of our outreach, we have a new DNAP logo and brochure to describe the program and highlight the areas (e.g., Magney Snively, Hartley) in the DNAP with individual fact sheets.



Parks Planning

Riverside Park

Improvements included site grading and excavation for drainage improvements, installation of a new playground structure and surfacing, improved site lighting, porta potty slab and enclosure, demolition of the existing community building, basketball court over the old building slab, and circulation sidewalk upgrades. Final striping of the basketball court, site landscaping and garden fencing will be completed in Spring 2019. The \$10,000 community match was met through cash and material donations and volunteer labor from the Riverside Community Club.



Irving Park

Improvements included removal of aged park infrastructure and installation of a new accessible walkway through the park, new stairs to the existing parking lot, installation of a new playground, relocation of the basketball court, site lighting and a gathering plaza space adjacent to the exiting garage/concession building. Final striping of the newly located and resurfaced basketball court will be completed in spring of 2019. The Irving Park Community Club met and exceeded the projects match requirement with a generous donation of \$30,000. Park Maintenance will install a porta potty slab and enclosure in 2019 and plant a pollinator meadow in the location of the old playground.



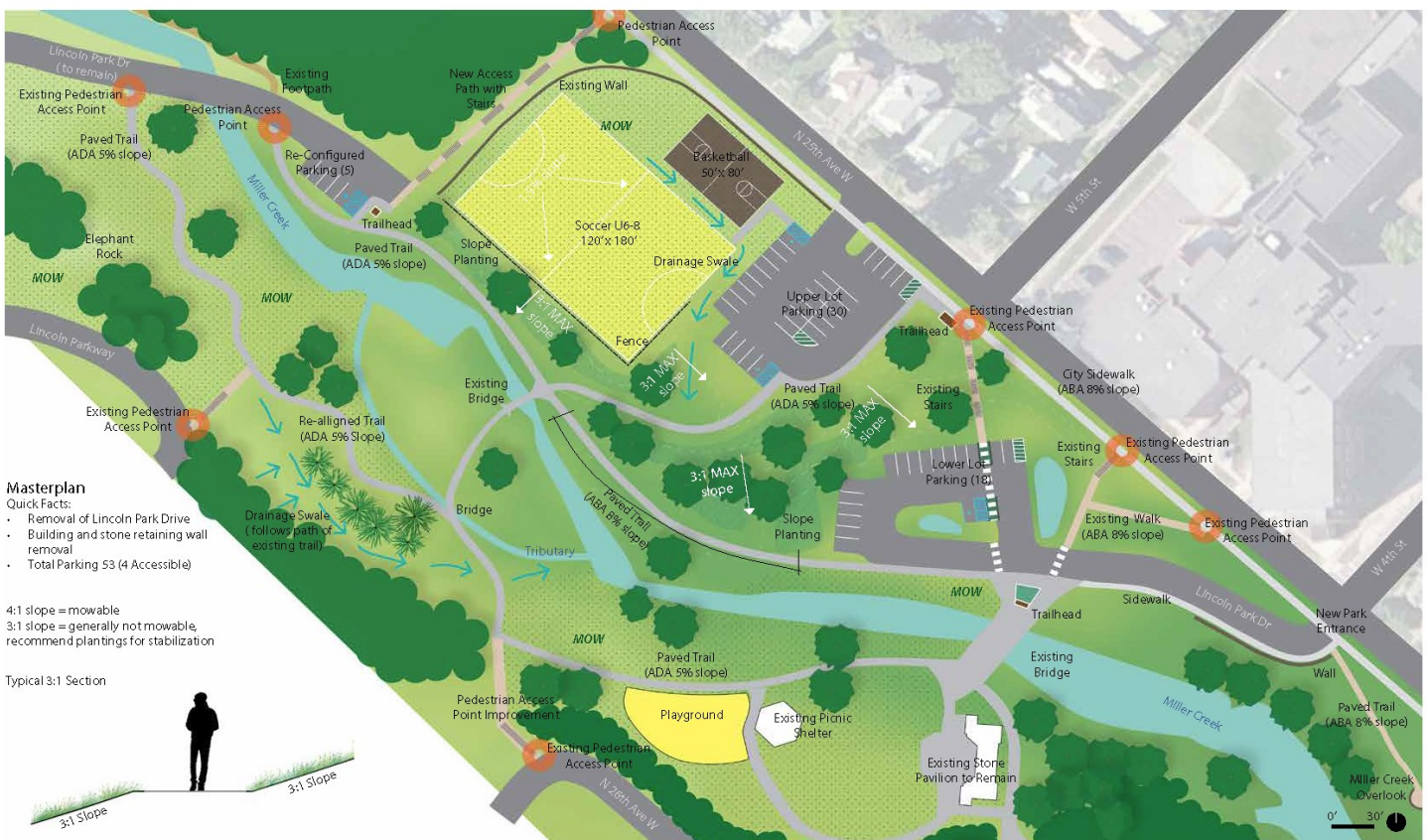
Glimpse Ahead

Lincoln Park

Completed in February 2016, the Lincoln Park Mini-Master Plan called for restoration of the park, including addressing safety, programming and accessibility needs. Prior to design, the project saw significant support from local community members, organizations and granting agencies. In addition to the City's financial commitment, Lincoln Park has received the following funds to date:

- \$50,000 US Bank Places to Play Grant
- \$51,475 Minnesota Super Bowl Committee Legacy Fund
- \$25,000 Essentia Health Donation
- \$42,500 Community Development Block Grant
- \$25,000 Maurice's Donation
- \$10,000 St. Luke's Donation
- \$25,000 Minnesota Power Donation
- \$750,000 National Park Service Grant
- \$304,000 Clean Water Grant

Site design progressed in 2018 and aims to create a destination-level neighborhood park investment. 2019 construction will include restoration of the stone pavilion and reopening of the restroom facilities, relocation, expansion and reconfiguration of the playground and picnic area with significant attention to accessible and exclusive play features, vegetation restoration, landscaping and stormwater improvements, new parking lots, trail circulation and accessibility improvements and lighting. Additional improvements may include relocation of the park entrance and improvements to the soccer field and basketball court. The City is excited for this community investment and thankful for the numerous community partnerships that continue to support and shape the project including the Lincoln Park Children and Families Collaborative, the Lincoln Park Business Group, and Ecolibrium 3.



Glimpse Ahead

Invasive Species Management Plan

The City of Duluth manages over 3,000 acres of open space designated for various uses such as parks, natural areas, trails, and open space protection. Invasive species cause damage to native plants and animals, natural ecosystems, recreation, tourism, agriculture, businesses, and human health. Invasive species are introduced through various pathways and are often the result of unintentional human actions. The purpose of an invasive species management plan is to provide an adaptive framework with goals, strategies, and actions to prevent the introduction, reduce the spread, and/or promote appropriate management of invasive species populations within the City of Duluth's public lands. It is intended to provide a flexible approach in prioritizing, managing, and monitoring areas and will eventually cover the full range of invasive species (i.e., terrestrial and aquatic plants, animals and pathogens). The benefits of this kind of plan are to:

1. Inhibit or eradicate invasive species which can displace, weaken or kill desirable native plants that will result in loss of diversity; pose human health risks degrade wildlife habitat, and/or disrupt healthy urban ecosystems.
2. Work with indigenous communities to restore and protect the natural resources their culture relies on.
3. Sustain outdoor recreation opportunities, an economical driver in this city due to the expanse of open space public land and water.
4. Reduce the expenditure of large sums of money for their control. Invasive species can and have left communities with decreased economic, environmental and social benefits.

Thanks to Duluth CISMA (Collaborative Invasive Species Management Area) and the MN Department of Agriculture staff, who office in City Hall, city staff has the added expertise and assistance for this work. A draft plan is almost complete and is expected to be available for upcoming grant applications to help implement desired actions.

Cross City Trail

Construction of a new major segment of the Cross City Trail is slated to begin in Summer 2019. The "River Route" will run from the current western terminus of the Cross City Trail at Carlton Street, under the ore docks, across Interstate 35 and through the riverfront area. The western end of the new segment will be at Irving Park. In addition to trail construction, Parks has secured a MN DNR Federal Recreational Trail Program grant that will support installation of signage and wayfinding along the existing trail segments. The Cross City Trail fills a critical gap in the statewide trail network, connecting the Munger State Trail to the Gitchi Gami Trail. The City continues to seek funding to complete the trail, working with local bike and pedestrian groups to help determine alignments that work for the community.

Canoe and Kayak Rental

In 2018, Councilor Noah Hobbs partnered with Local Iron Workers Union 512 to provide in-kind labor to fabricate three kayak/canoe racks. Racks will be installed at Brighton Beach, Park Point and the future Spirit Landing. Parks will administer these rentals using their current online reservation software. The rack rental is a fee-based service that will allow users to rent a rack slot for their personal watercraft for a one-time seasonal fee. Registration opens April 1, 2019, with access to the racks starting on May 1, 2019.

Glimpse Ahead

Sargent Creek Bridge

Rehabilitation of the Sargent Creek Railroad Bridge will enable completion of the DWP multi-use trail and provide safe passage over Sargent Creek. The bridge is currently a three span two girder structure with an overall bridge length of approximately 136 feet. Goals of this project include addressing both structural and safety concerns for recreational traffic. Design commenced in 2019 with construction anticipated in 2020. Deteriorated deck timbers will be removed and replaced with a new pre-fabricated treated timber deck. A cable railing system like that on the completed Stewart Creek Bridge will be installed for user safety while maintaining unobstructed views of the St. Louis River Estuary. The west abutment will be re-constructed to address deterioration and reduce earth loads on the bridge seat. Through a partnership with South St. Louis Soil and Water Conservation District, the stream bed will be restored underneath the bridge to reduce erosion and scour occurring underneath the east pier. This project is funded in part by a \$250,000 MN DNR Regional Trail Program grant, State Legacy Dollars, City Half and Half dollars and additional state funding for the SWCD restoration efforts for the creek.

Lakewalk Mini Master Plan

Parks Staff kicked-off the Lakewalk Mini-Master Planning process in late 2018 with a series of interdepartmental project scoping meetings to assess projects and developments along the Lakewalk and adjacent business districts. Representatives from Community Planning, Business Development, Streets, Engineering and Facilities Management mapped current and future project as well as big ideas from their respective work areas. The scope of the plan will be the Lakewalk from Bayfront Park through Brighton Beach and will address accessibility, user conflicts, community connection, Baywalk green space, Gichi-ode' Akiing, asset management, safety, signage and wayfinding and water access. The planning process will include stakeholder and public engagement.

DWP Infrastructure Restoration and Plan

In 2018 Parks Staff initiated a planning process for the DWP Trail Corridor that goes beyond the recently completed construction and restoration efforts to address topics and concerns collected from previous planning efforts such as the Duluth Traverse Mini-Master Plan, St. Louis River Corridor Trails Plan and Trails and Bikeway Plan. Planning efforts will produce a publicly vetted document that will guide future usage, design and development. The document will serve as an addendum to the current St. Louis River Corridor Trails Plan approved in 2017 and will advise on technical use and trail standards. After approval by the Parks Commission and City Council, the plan aims to:

- Identify best practices for trail etiquette, safety, signage, corridor usage and user conflict mitigation.
- Develop infrastructure in harmony with the surrounding environment.
- Provide clarity on the usage and development of the DWP trail and corridor and clean up contradicting recommendations from past planning efforts.
- Provide high quality opportunities for local residents and regional users.

Campus Connector Trail Plan

The Campus Connector Trail is a paved, multi-use commuter recreational trail that will run from the Lakewalk to Rice Lake Road and provide vertical connectivity for residents, nodes of business and education institutes along its path. Initial planning started in 2010 and a portion of the trail along Congdon Parkway was completed in 2014. In 2016, the City installed bike lanes along College Street. In late 2018, City staff in partnership with the Metropolitan Interstate Council resumed planning efforts to refine the scope and develop public and stakeholder engagement opportunities. Planning efforts will address the current gap in existing bike and pedestrian infrastructure and result in a final Mini-Master Plan.

Americorps Partnership

In 2019, Parks and Recreation is embarking on a new initiative to increase programming in our parks. We are collaborating with True North AmeriCorps to place members with us and create programming positions to serve our community. Programs will include youth, family, adult, and special events.

Glimpse Ahead

2018 Lakewalk Storm Restoration

In a years' time Duluth's Lake Superior shoreline, and adjacent amenities, were severely damaged by three powerful wind driven storm surges and huge waves. Together, these storms, in October 2017, April 2018 and October 2018 displaced large quantities of stone and soil, damaged much of the wooden boardwalk and benches and even ripped out portions of asphalt path and trail lighting. Working with the DNR and Army Corp of Engineers on necessary permitting and acceptable shoreline construction details and with disaster recovery funding from the State of Minnesota and the Federal Government, the City has embarked on a multi-year effort to repair the damage and renew the shoreline and Lakewalk amenities. The focus is to rebuild in ways that will help ensure a long lasting, updated Lake Superior interface for Duluth that is much better suited for the stronger and more powerful storms that seem to be becoming the norm. In October 2018, construction began to recover a severely damaged portion of shoreline directly behind the Fitger's complex as the first of several shoreline recovery phases. In Spring 2019 the City plans to begin repairs on the shoreline between Phase 1 and the Veteran Memorials. Canal Park restoration is planned for late 2019 or early 2020. Restoration of damaged area heading north will happen as soon as financial and staffing resources allow. Besides repairing the shoreline to be more robust, the Lakewalk, and connecting trail sections, will be widened to better accommodate the steadily increasing usage by both residents and visitors to Duluth.



Thank You For Your Partnership!

1854 Treaty Authority	East Hillside Community Club	Morgan Park-Smithville Community Club
Age Well Arrowhead	Ecolibrium3	Nah-Gah-Chi-Wa-Nong Reservation
Alliance for the Great Lakes	Environmental Protection Agency	National Association for the Advancement of Colored People (NAACP)
Arrowhead Bowhunters Alliance	Essentia Duluth Heritage Sports Center	Neighbors of Lower Chester Park
Arrowhead Economic Opportunity Agency	Fond du Lac Community Club	North Shore ATV Club
Arrowhead Fast Pitch League	Friends of Duluth Public Golf	North Shore Display
Arrowhead Regional Development Commissions	Friends of Tennis	North St. Louis Soil and Water Conservation District
Arrowhead Transit	Friends of the Lakewalk	Northern Expressions Arts Collective
Arrowhead Youth Soccer Association (AYSA)	Friends of West Duluth Parks and Trails	Northern Minnesota Track Club
Bentleyville Tour of Lights	Gary New Duluth Community Club	Northland Paddlers Alliance
Billy Casper Golf	GND Development Alliance	Northwoods Children's services
Boys and Girls Clubs of the Northland	Goodwill Industries	Norton Park Community Club
Central Hillside Community Club	Grandma's Marathon	Over the Hill Night Riders Snowmobile Club
Chester Bowl Improvement Club	Great Lakes Alliance	Park Point Community Club
Cities of Service	Greater Downtown Council	Piedmont Heights Community Club
College of St. Scholastica	Harbor City International School	Portman Recreation Association
Community Action Duluth	Harrison Community Club	Rainbow Community/Senior Center
Corporation for National and Community Service	Hartley Nature Center	Riverside Community Club
Courage Kenny Rehabilitation Institute	Hawk Ridge Bird Observatory	RSVP Senior Corps
Cyclists of Gitchee Gumees Shores (COGGS)	Head of the Lakes United Way	Saint Louis County
Destination Duluth	Healthy Duluth Area Coalition	St Louis County
Drift Toppers Snowmobile Club	Hike Duluth	Senior Center Clubs
Duluth Amateur Hockey Association	Indian Point Campground	Senior Corps- RSVP
Duluth Amateur Youth Basketball Association (DAYBA)	Irving Community Club	Sierra Club
Duluth Area Chamber of Commerce	ISD 709 Duluth Public Schools	South St. Louis Soil & Water Conservation District
Duluth Area Horse Trail Alliance (DAHTA)	Izaak Walton League	Spirit Mountain Recreation Authority
Duluth Area Pickleball Association	Lake Superior & Mississippi Railroad (LSMR)	St. Croix Hospice
Duluth Area Youth Softball Association	Lake Superior College	St. Louis River Alliance
Duluth Audubon Society	Lake Superior Disc Golf Community	Superior Hiking Trail Association (SHTA)
Duluth Bikes	Lake Superior Rose Society	The Duluth Area YMCA
Duluth Children's Museum	Lake Superior Zoo	The Stewardship Network
Duluth Climbers Coalition (DCC)	Lakeside-Lester Community Club	United States Environmental Protection Agency
Duluth Community Garden Program	Lincoln Park Business Group	University of Minnesota-Duluth
Duluth Community School Collaborative	Lincoln Park Children and Families Collaborative	University of Minnesota Extension
Duluth Cross-Country Ski Club (DXC)	Longview Tennis Club	US Steel
Duluth Dog Parks	Men as Peacemakers	Valley Youth Centers of Duluth
Duluth Economic Development Authority (DEDA)	Merritt Community Club	Visit Duluth
Duluth Entertainment and Convention Center (DECC)	Merritt Creek Academy	West Duluth Business Club
Duluth Garden Flower Society	Minnesota Department of Agriculture	Western Lake Superior Sanitary District
Duluth Huskies	Minnesota Department of Health	Wheels on Trails
Duluth Invaders	Minnesota Department of Natural Resources	The Hills Youth and Family Services
Duluth Local Initiatives Support Corporation	Minnesota Geocachers Association	Youth Outdoors-Duluth
Duluth Monarch Buddies	Minnesota GreenCorps	Youthworks
Duluth Preservation Alliance	Minnesota Land Trust	Zeitgeist Center for Arts and Community
Duluth Softball Players Association	Minnesota Point Preservation Society	
Duluth Superior Area Community Foundation	Minnesota Pollution Control Agency	
Duluth Ultimate Community	Minnesota Power	
Duluth Youth Agency Coalition	Minnesota Sea Grant	
Duluth-Superior Metropolitan Interstate Council (MIC)	Monarch Healthcare Management	