

CONCEPTUAL ROUTING OPTION 1

ENGER PARK GOLF COURSE

Duluth, Minnesota

9-HOLE ACADEMY COURSE

1	387	4
2	527	5
3	410	4
4	381	4
5	140	3
6	375	4
7	145	3
8	398	4
9	325	4
Total	3,088	35

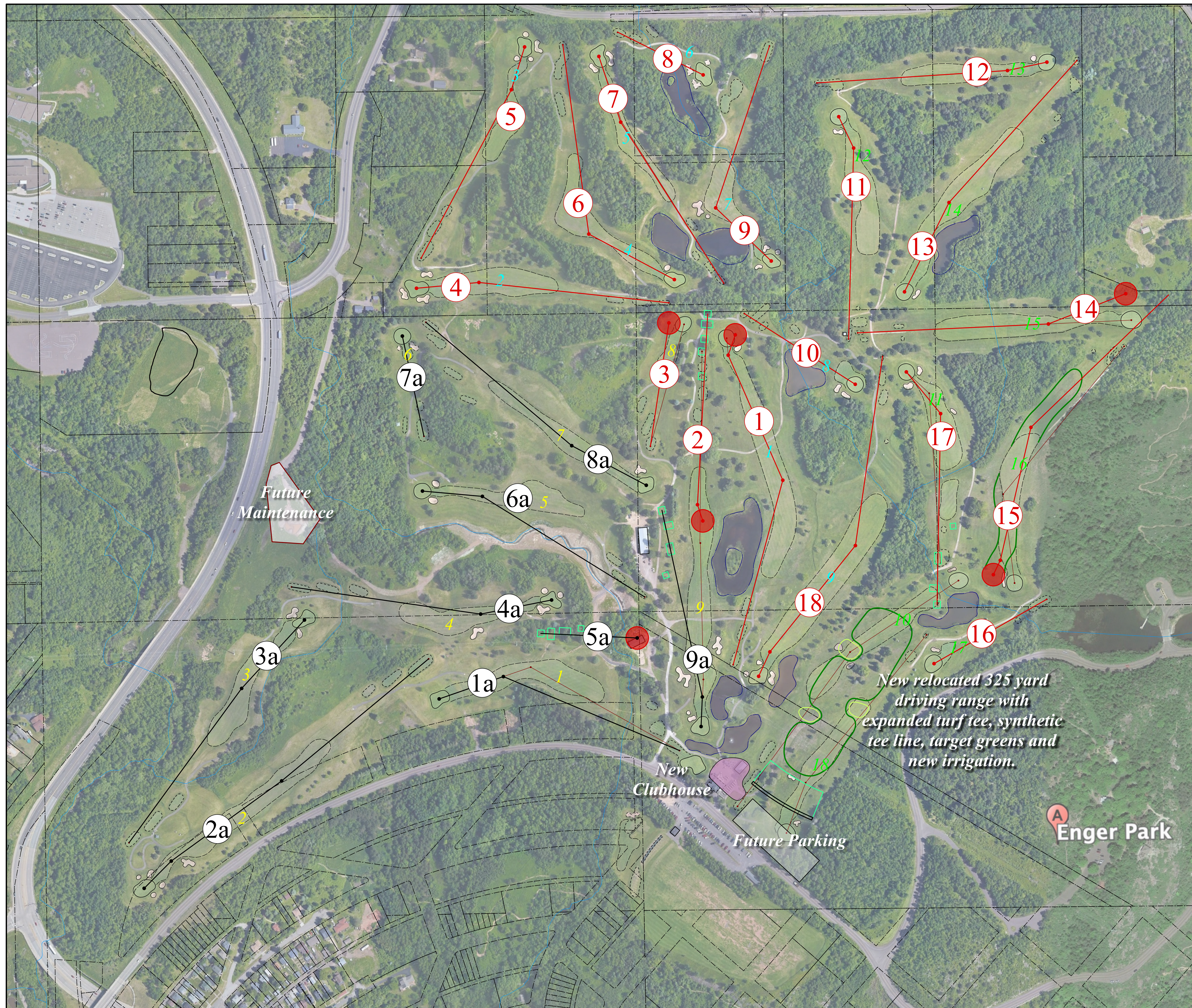
REGULATION COURSE

1	499	5
2	305	4
3	186	3
4	369	4
5	343	4
6	417	4
7	378	4
8	143	3
9	341	4
Out	2,981	35
10	193	3
11	310	4
12	338	4
13	425	4
14	405	4
15	500	5
16	220	3
17	360	4
18	485	5
In	3,236	36
Total	6,217	71

- 9-hole academy course & 18-hole regulation course layout requiring 6 new greens & 4 new sets of tees
- Golf course irrigation system
- Improved irrigation water supply and delivery
- Fairway regrading and re-grassing
- Cart path improvements
- Bunker renovation
- Forward tee construction
- Construct new expanded 325 yard driving range with 30 stations
- New clubhouse
- Handicap parking

June 18, 2021

0 100 200 300 400 500 600 FT



CONCEPTUAL ROUTING OPTION 2

ENGER PARK GOLF COURSE

Duluth, Minnesota

FRONT (RED) COURSE

1	387	4
2	527	5
3	410	4
4	381	4
5	145	3
6	375	4
7	398	4
8	186	3
9	378	4
Out	3,140	35

MIDDLE (BLACK) COURSE

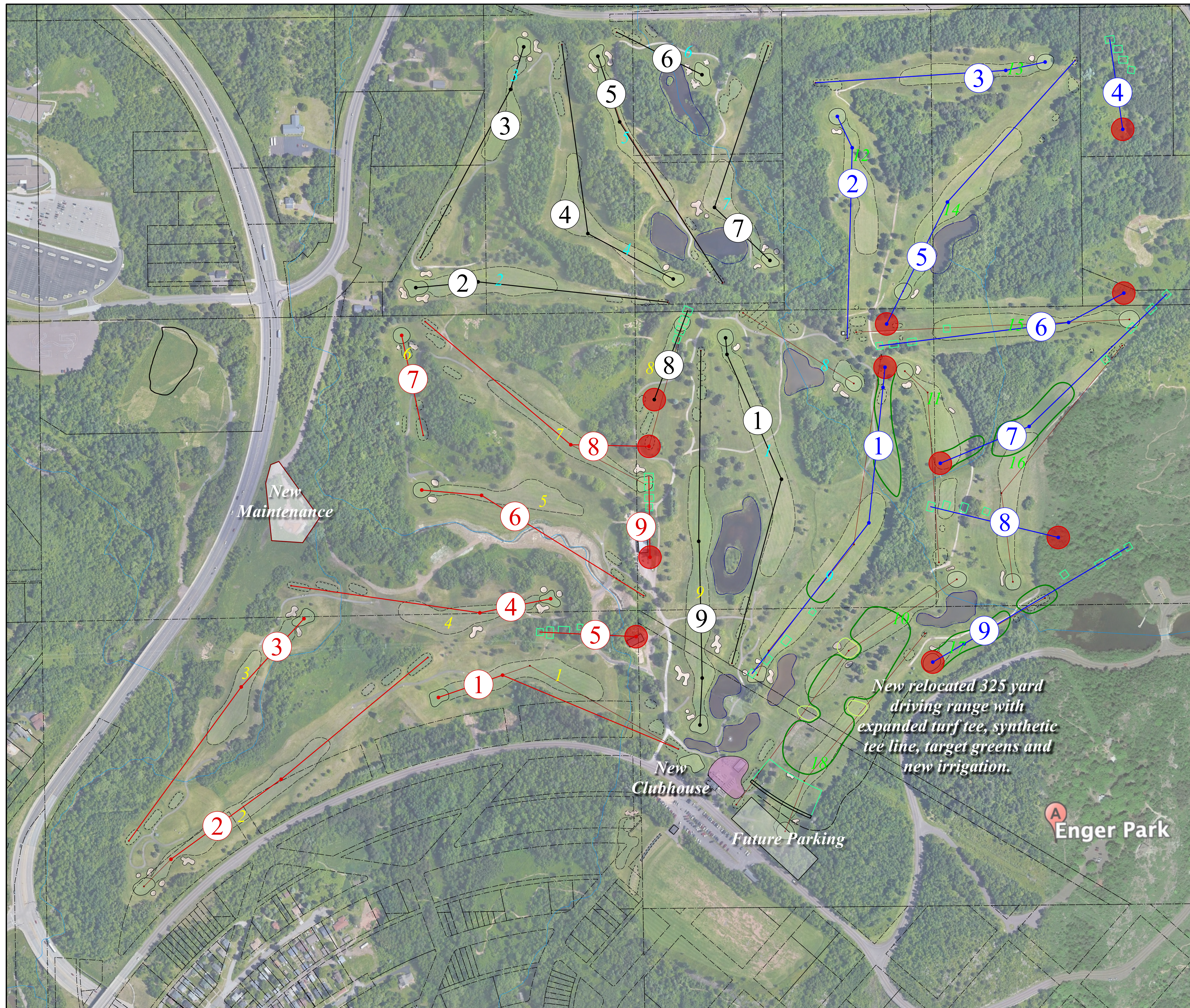
1	499	5
2	369	4
3	343	4
4	417	4
5	378	4
6	143	3
7	341	4
8	140	3
9	550	5
Out	3,180	36

BACK (BLUE) COURSE

1	510	5
2	310	4
3	338	4
4	135	3
5	480	5
6	370	4
7	420	4
8	195	3
9	335	4
Out	3,093	36

- Three returning 9-hole regulation courses requiring 11 new greens & 9 new sets of tees
- Golf course irrigation system
- Improved irrigation water supply and delivery
- Fairway regrading and re-grassing
- Cart path improvements
- Bunker renovation
- Forward tee construction
- Construct new expanded 325 yard driving range with 30 stations
- Construct new maintenance facility
- New clubhouse
- Handicap parking

June 18, 2021



CONCEPTUAL ROUTING OPTION 3

ENGER PARK GOLF COURSE

Duluth, Minnesota

FRONT (YELLOW) COURSE

1	340	4
2	527	5
3	410	4
4	381	4
5	375	4
6	145	3
7	398	4
8	186	3
9	550	5
Out	3,312	36

MIDDLE (BLUE) COURSE

1	499	5
2	369	4
3	343	4
4	417	4
5	378	4
6	143	3
7	341	4
8	193	3
9	485	5
Out	3,168	35

BACK (GREEN) COURSE

1	410	4
2	332	4
3	310	4
4	338	4
5	425	4
6	405	4
7	408	4
8	194	3
9	315	4
Out	3,137	35

- Original 27-hole regulation courses with slight modifications for future parking requiring 2 new greens & 1 new set of tees
- Golf course irrigation system
- Improved irrigation water supply and delivery
- Fairway regrading and re-grassing
- Cart path improvements
- Bunker renovation
- Forward tee construction
- Reconstructed and expanded 295 yard driving range with 27 stations with parking moved to the north
- New clubhouse
- Handicap parking

June 18, 2021



Reconstruct and expand driving range to include 295 yard driving range with expanded turf tee, synthetic tee line, target greens and new irrigation.

