

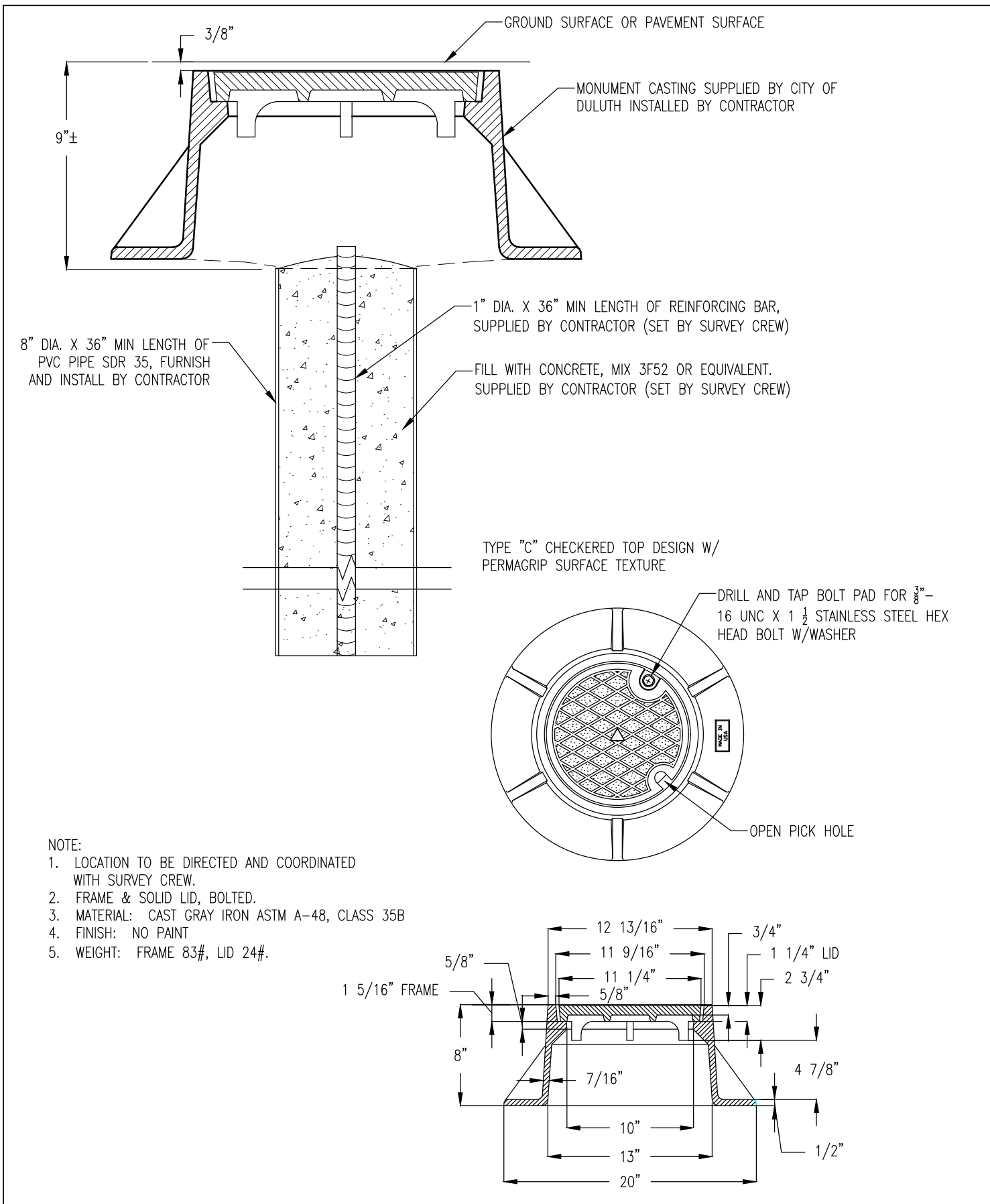
SURVEY DETAILS

**SUR-1**

SURVEY MONUMENT

**SUR-2**

CONCRETE ENCASED CASTING COLLAR IN ROADWAY



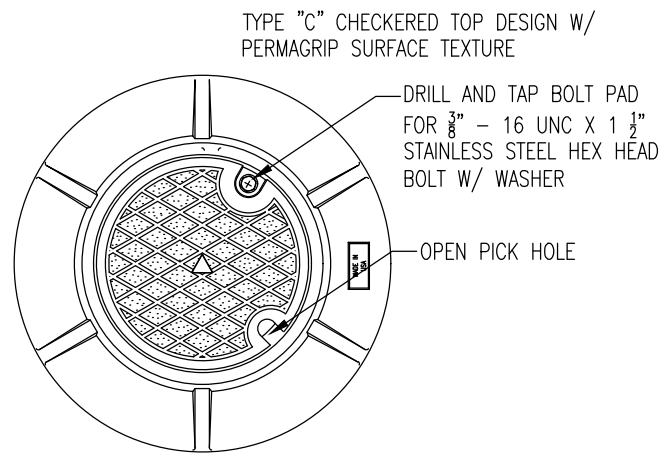
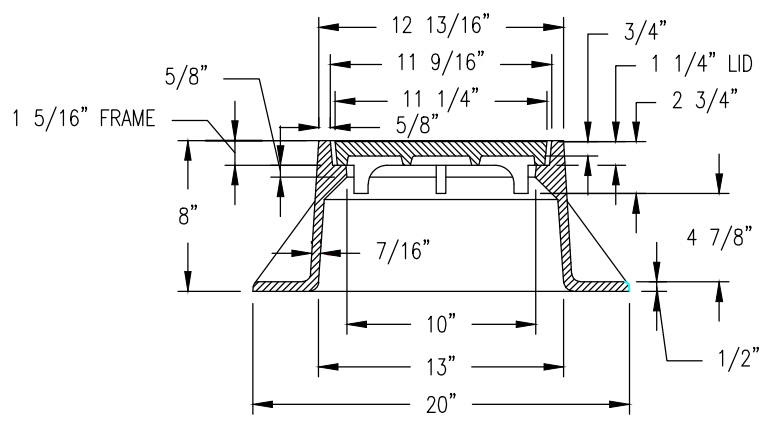
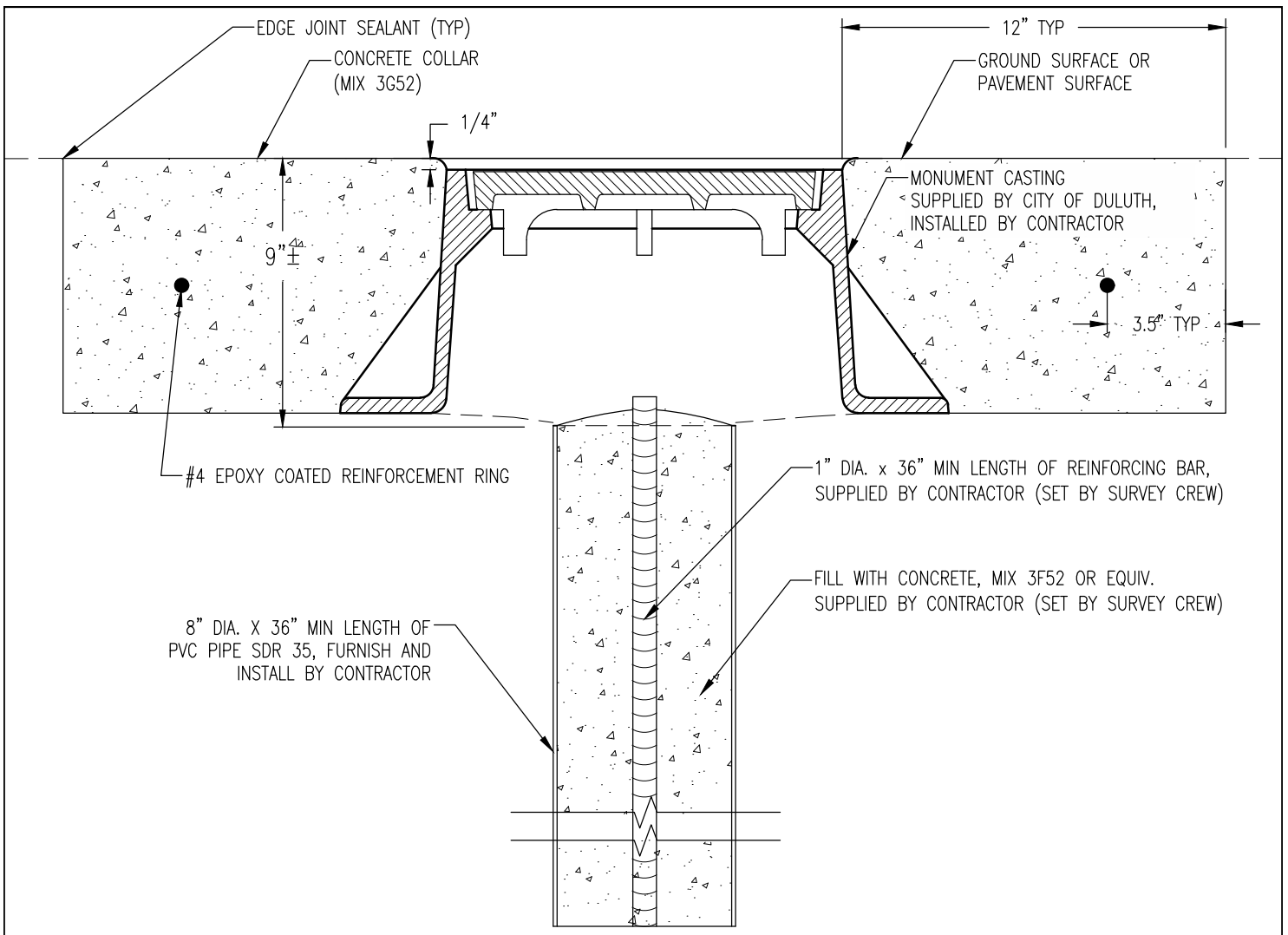
CONSTRUCT SURVEY MONUMENT

SUR-1

REVISED/APPROVED 04/05/2019

CITY OF DULUTH STANDARD DETAIL  
DEPT. OF PUBLIC WORKS AND UTILITIES

NO SCALE



- GENERAL NOTE:
1. LOCATION TO BE DIRECTED AND COORDINATED WITH SURVEY CREW.
  2. FRAME & SOLID LID, BOLTED.
  3. MATERIAL: CAST GRAY IRON ASTM A-48, CLASS 35B
  4. FINISH: NO PAINT
  5. WEIGHT: FRAME 83#, LID 24#.
  6. CONCRETE (MIX NO 3G52) COLLAR TO ENCASE CASING.
  7. CONCRETE COLLAR SHALL BE CIRCULAR LAYOUT. REMOVE PAVEMENT AND BASE WITH ROTATING CUTTING DEVICE.
  8. FINISH CONCRETE EDGE WITH 1/4" RADIUS. SEAL JOINT BETWEEN PAVEMENT AND COLLAR.

CONCRETE ENCASED CASTING COLLAR IN ROADWAY		SUR-2
REVISED/APPROVED 04/05/2019	CITY OF DULUTH STANDARD DETAIL DEPT. OF PUBLIC WORKS AND UTILITIES	NO SCALE